

PSM PARTNERSHIP FORUM ON THE SUSTAINABLE DEVELOPMENT GOALS

WHEN

THURSDAY OCTOBER 20 / 15:00 – 18:00



INTRODUCTIONS

H.E Inge Nordang, Ambassador, Permanent Representative to the UN Organisations in Rome, Norwegian Embassy in Rome

Daniel J. Gustafson, Deputy Director-General (Operations), FAO

Stefano Prato, CSM Secretariat

RAPID FIRE PRESENTATIONS ON THE SDGs

Moderator: Jaine Chisholm Caunt,
Chair of the Private Sector Mechanism (PSM)

CONCLUSIONS

Ramesh Kana, CEO, Emery Oleochemicals

Adrienne Gardaz Cuendet, Senior Policy Manager, UN Global Compact

Anna Burzykowska, Earth Observation Projects Specialist, European Space Agency

H.E Amira Gornass, Permanent Representation of Sudan to FAO, CFS Chair



Fatimah Karim (F)
MYS-60178832501
Rice, Oil Palm, Chili
250142N 1030448E



Network Malaysia

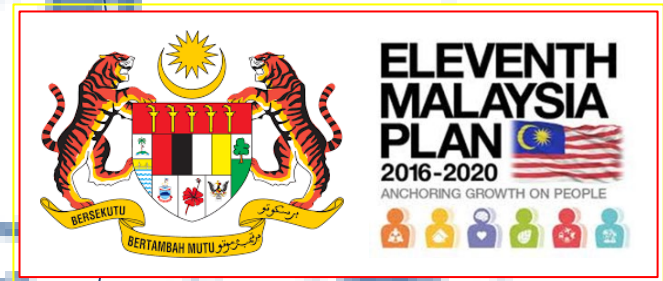


awba



ASEAN Pilot Projects

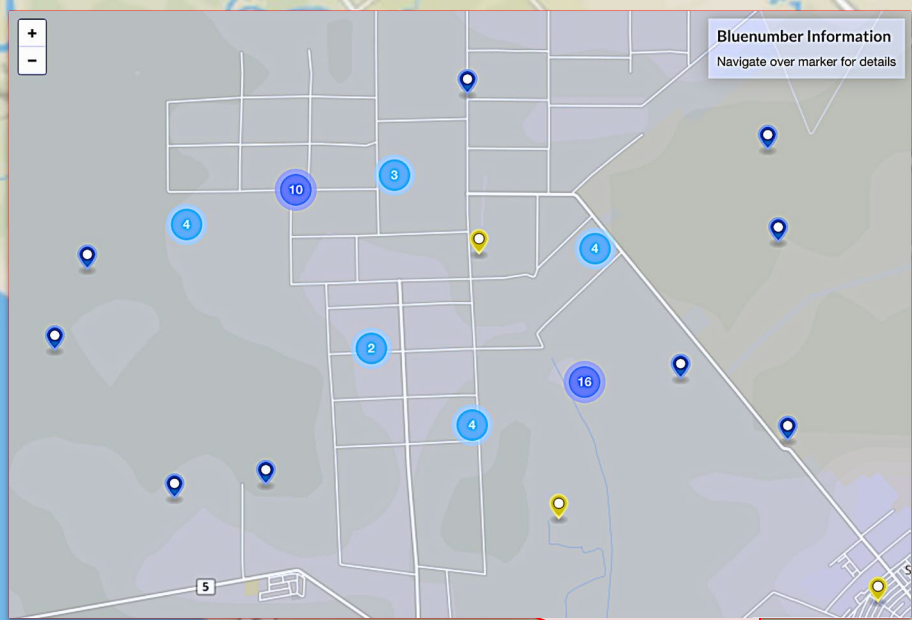
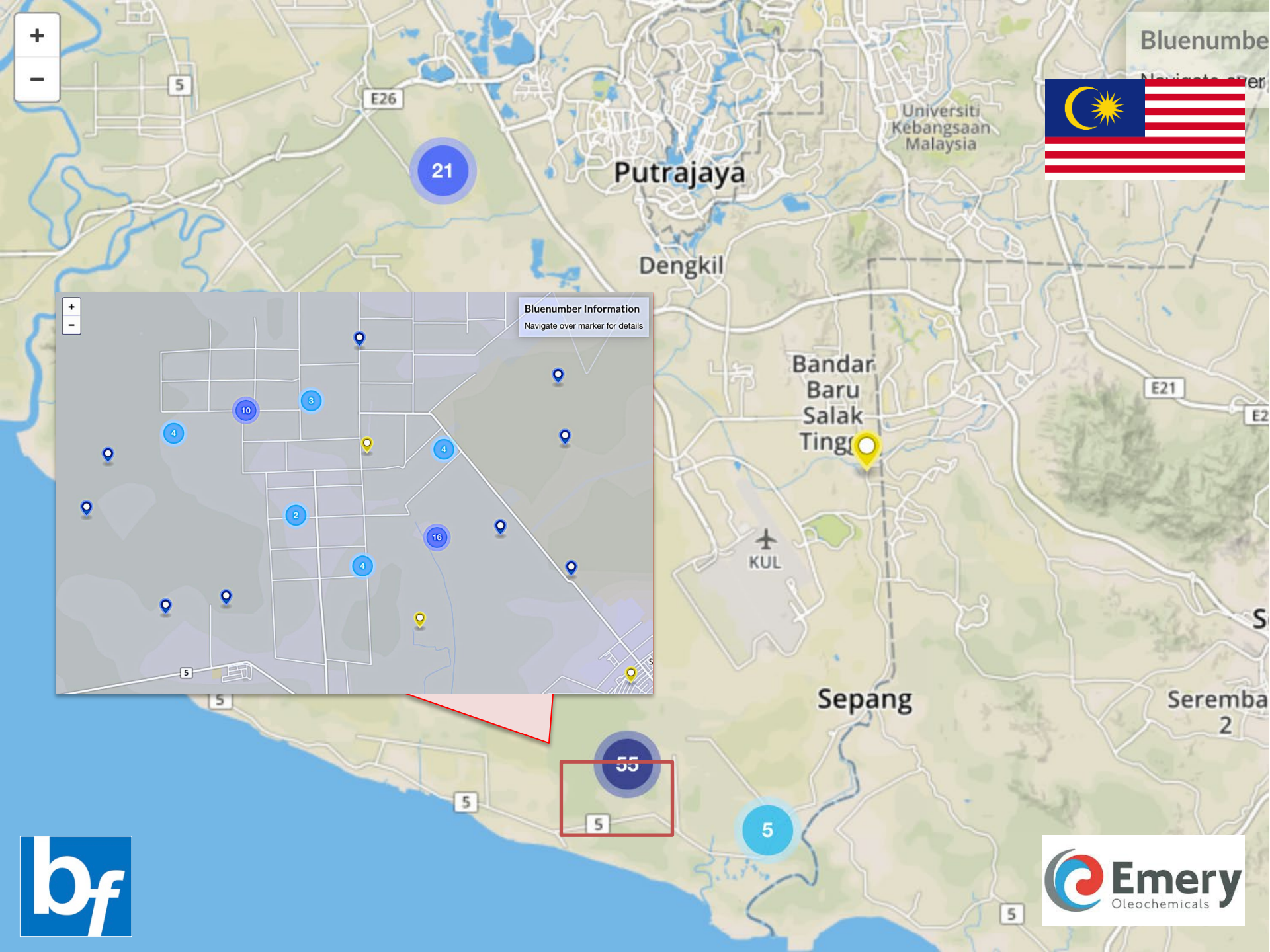
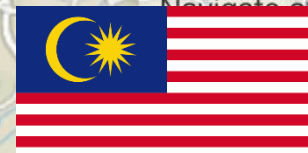
Creating a Regional Platform Economy for Food & Agriculture





Bluenumber

Navigation



Bluenumber Information
Navigate over marker for details

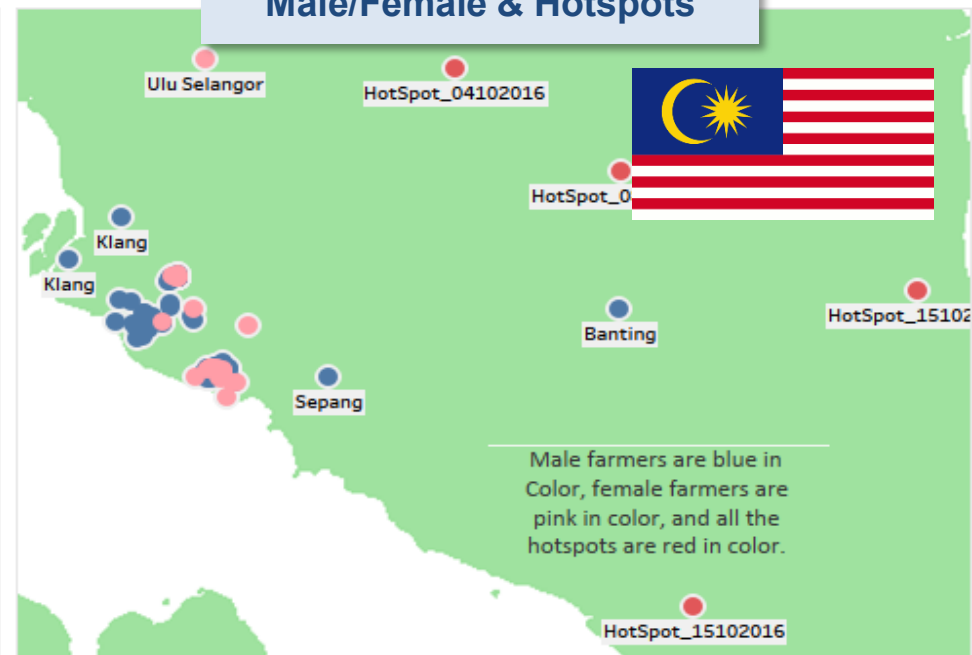


Smallholder Locations v. Fires

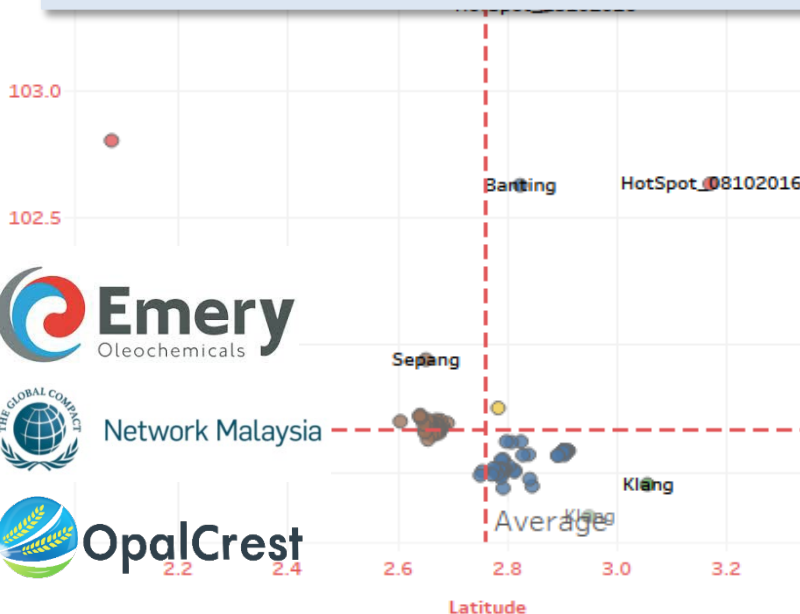
The fires are shown in red/orange boxes. None of those boxes overlap in the regions where farmers are located. Most fires are in Sumatra and very few in Peninsular Malaysia - Based on Last 8 days

HotSpot_04102016
HotSpot_08102016
Klang
Sungai Pelek
HotSpot_05102016
HotSpot_05102016

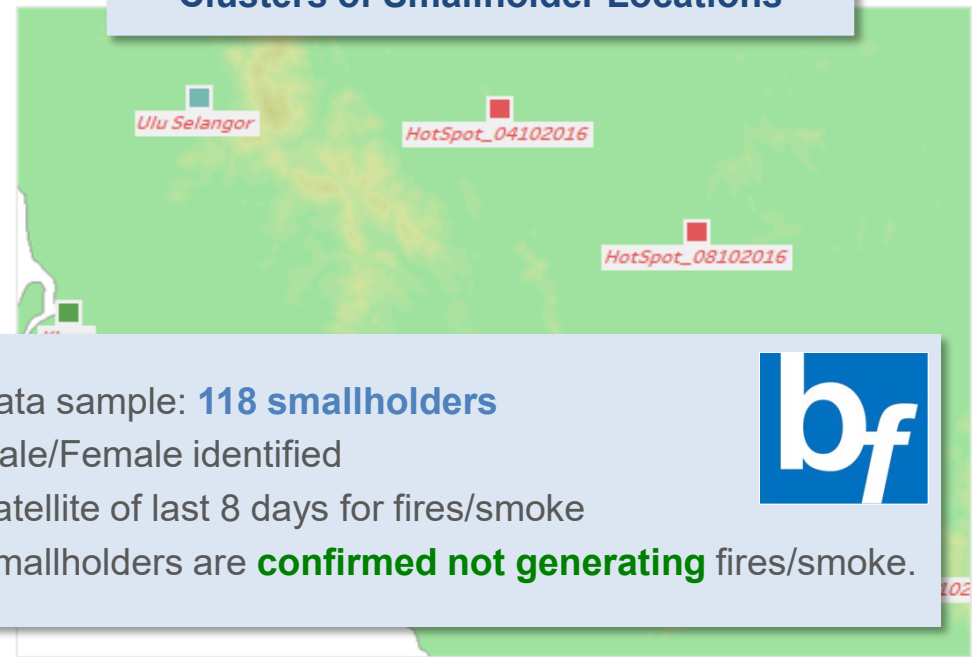
Male/Female & Hotspots



Classification by Long/Lat



Clusters of Smallholder Locations



- Data sample: **118 smallholders**
- Male/Female identified
- Satellite of last 8 days for fires/smoke
- Smallholders are **confirmed not generating** fires/smoke.



'Ground-Truthing' to inform Government's policy targets

Shwebo: North, wealthier district
Farmer reports **variety of crops**,
Onion cash crop and contributing
largest % household income.



Myanmar
(Burma)

199
Men

227
Farmers

28
Women

Yadashe Bago: South, poorer
Key crops **Beans and Pulses**, local
distribution, fragmented income base.
No Women landowners.



Paungde

Tailor Inputs →

Market Access →

Quality & Safety

Tailor Input 1
Formula Type

27
Natalin

Raise quality
through inputs for
market access

Enable access to
nearest local
market

Tailor Input 2
Formula Type

3

18

8

2

4

8

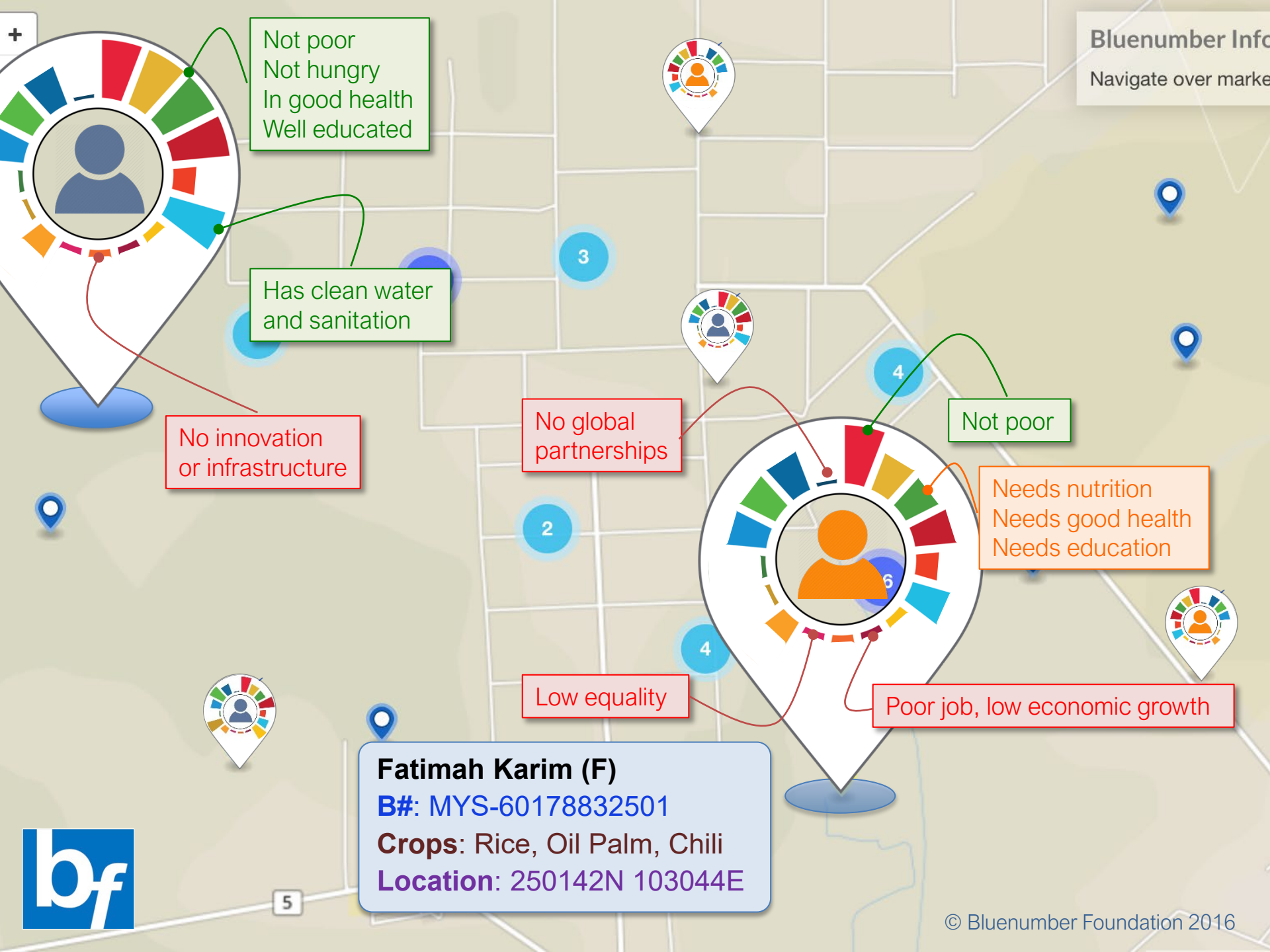
3



awba



Zigon



Fatimah Karim (F)

B#: MYS-60178832501

Crops: Rice, Oil Palm, Chili

Location: 250142N 103044E

CONCLUSIONS

Ramesh Kana, CEO, Emery Oleochemicals

Adrienne Gardaz Cuendet, Senior Policy Manager, UN Global Compact

Anna Burzykowska, Earth Observation Projects Specialist, European Space Agency

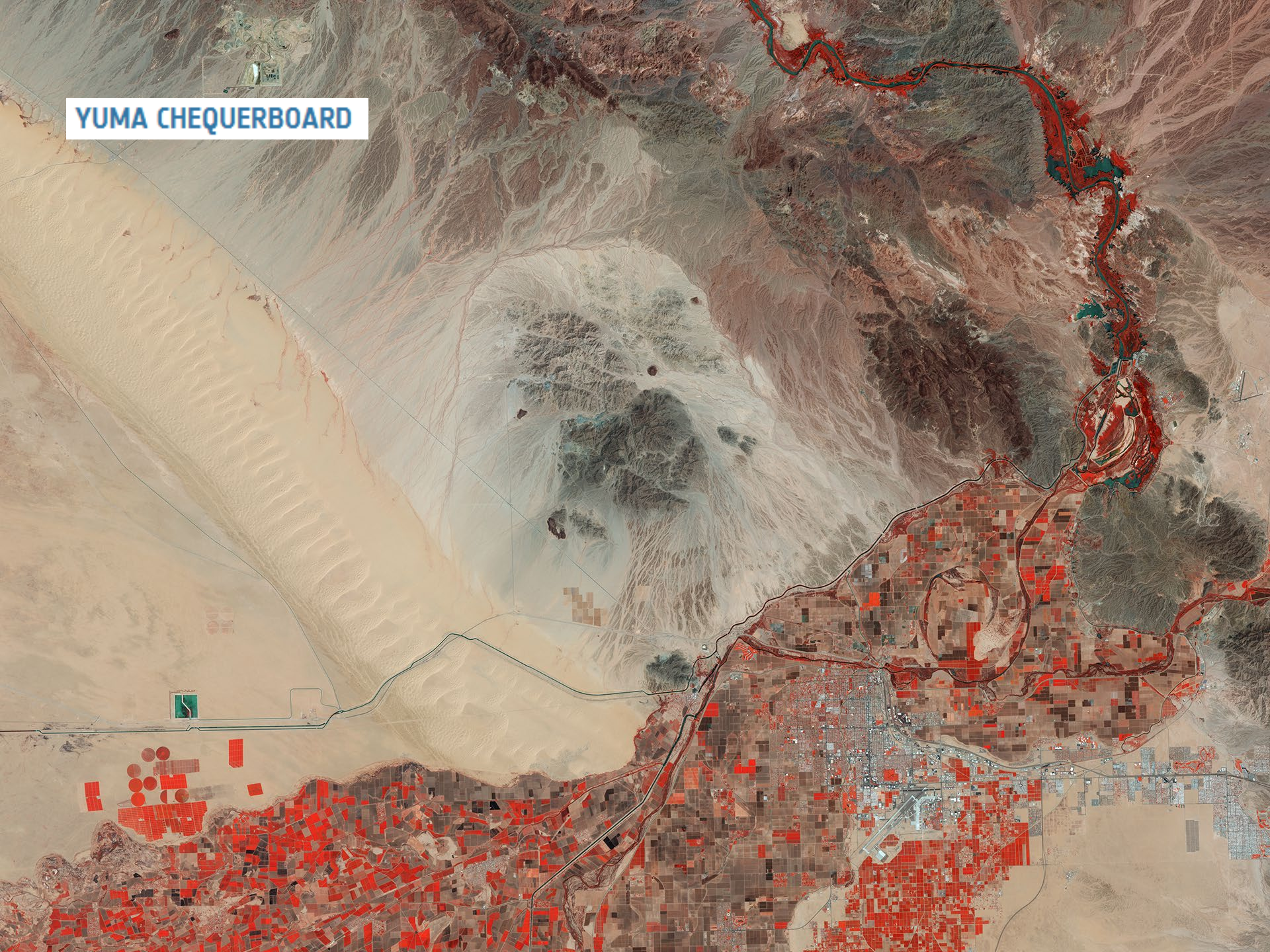
H.E Amira Gornass, Permanent Representation of Sudan to FAO, CFS Chair



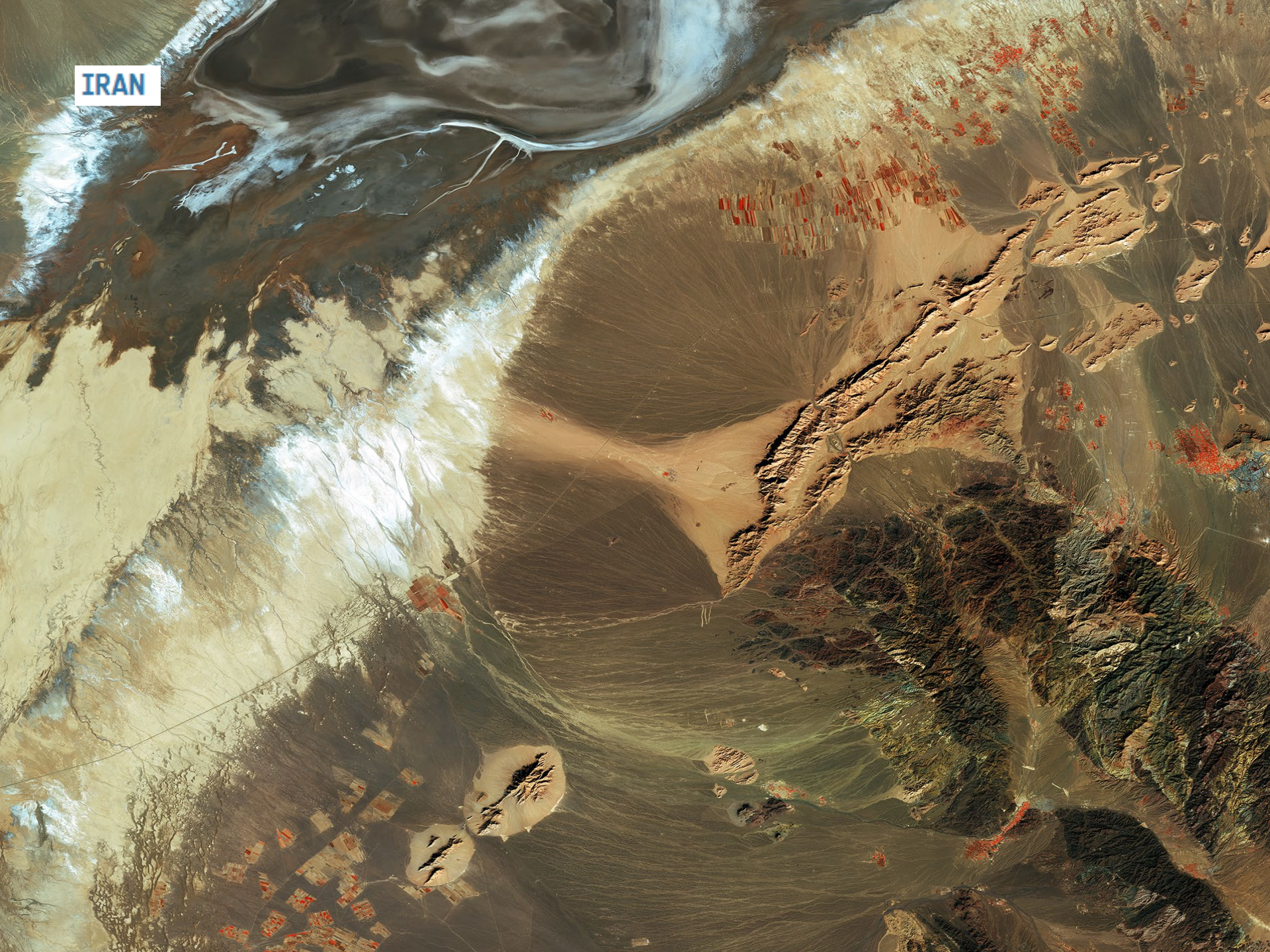
CENTO, ITALY



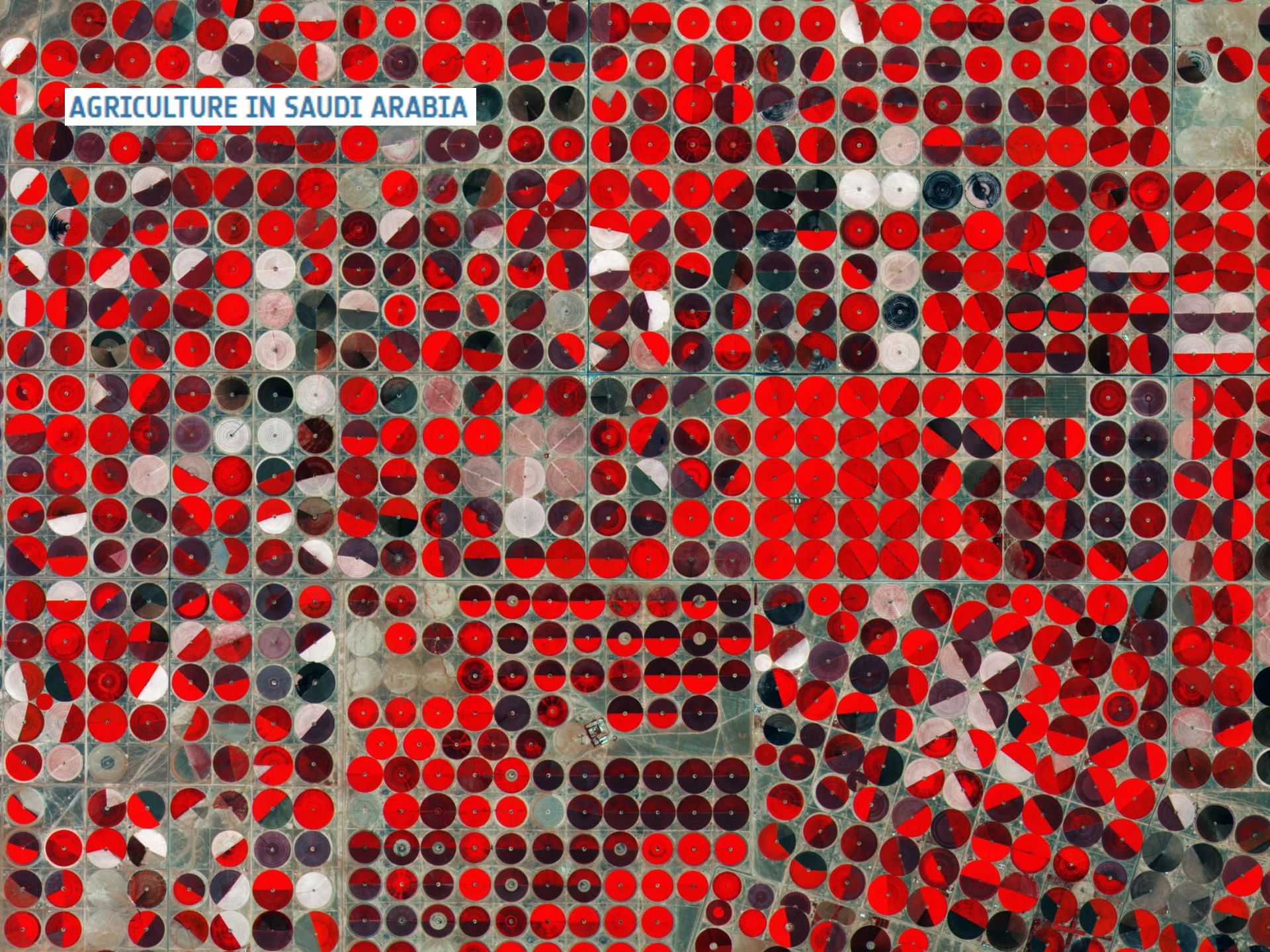
YUMA CHEQUERBOARD



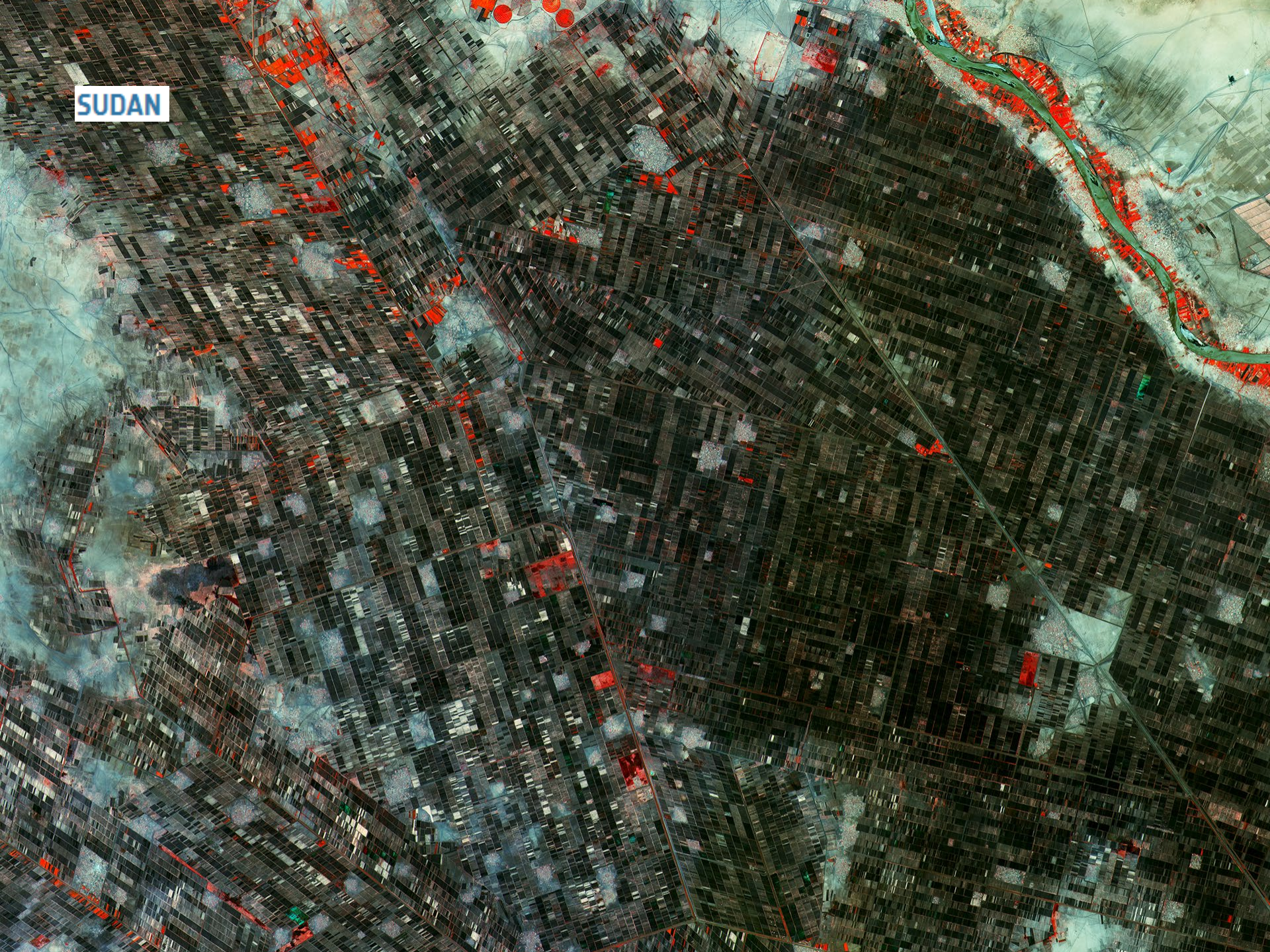
IRAN



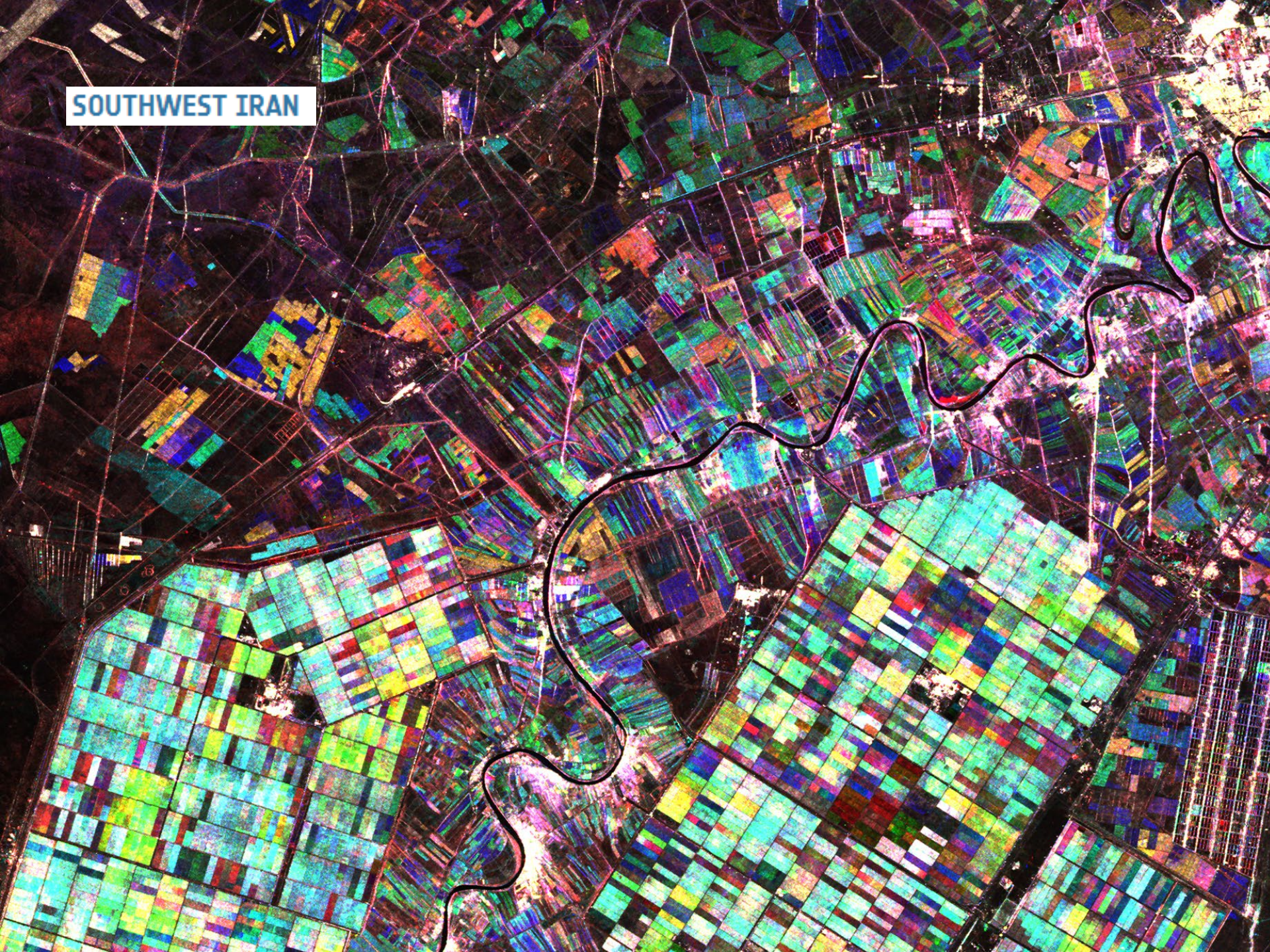
AGRICULTURE IN SAUDI ARABIA



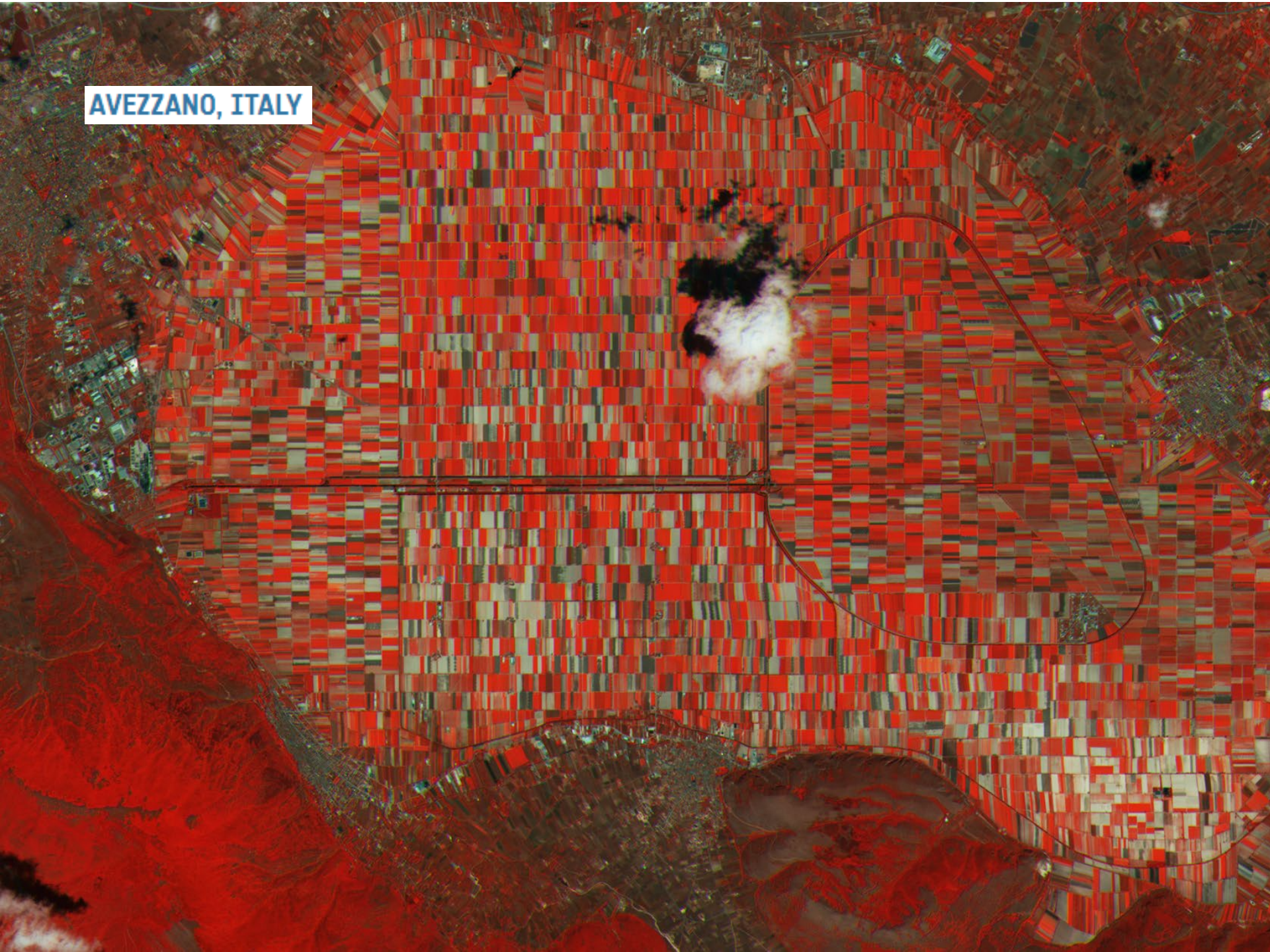
SUDAN



SOUTHWEST IRAN



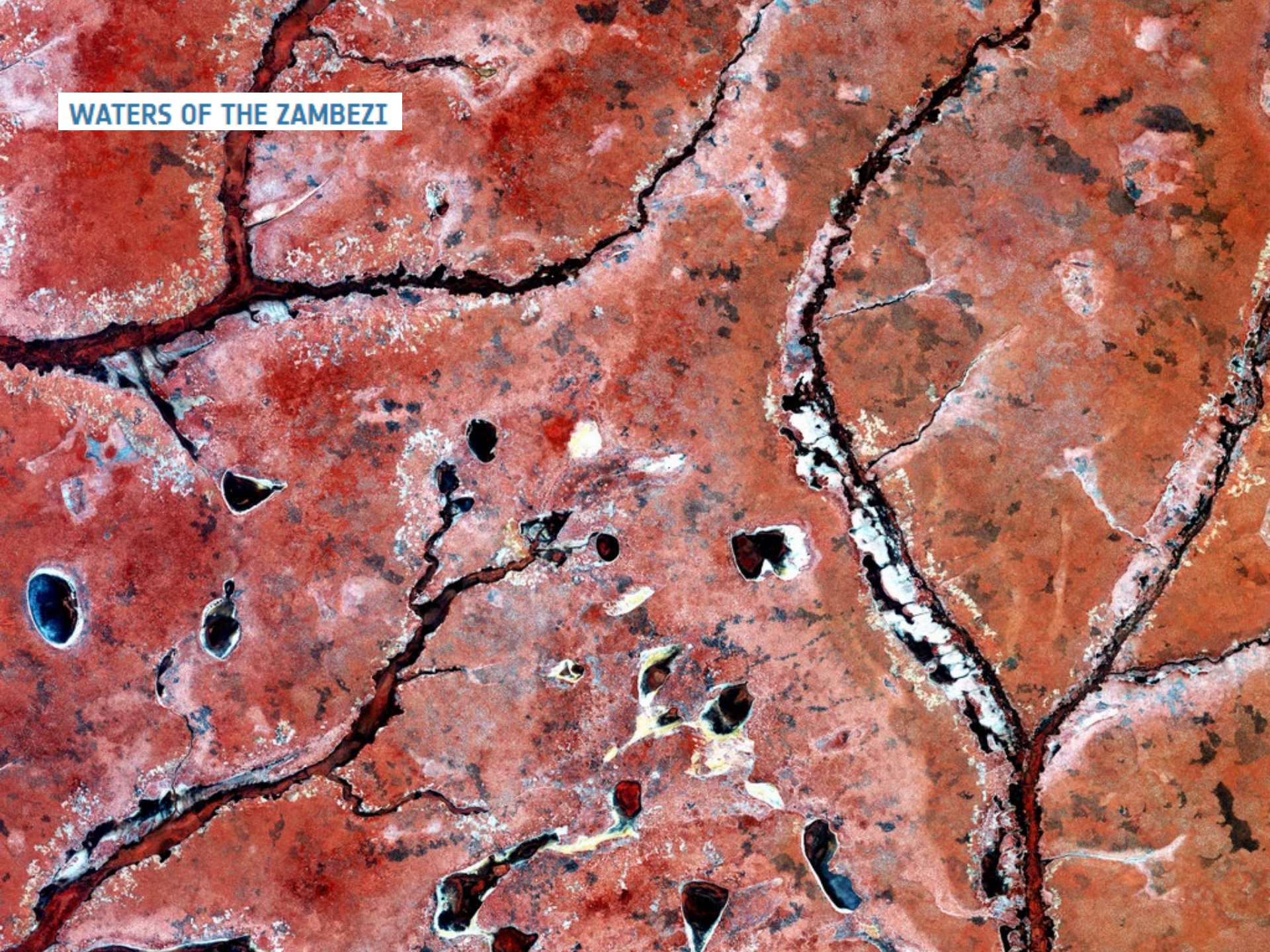
AVEZZANO, ITALY



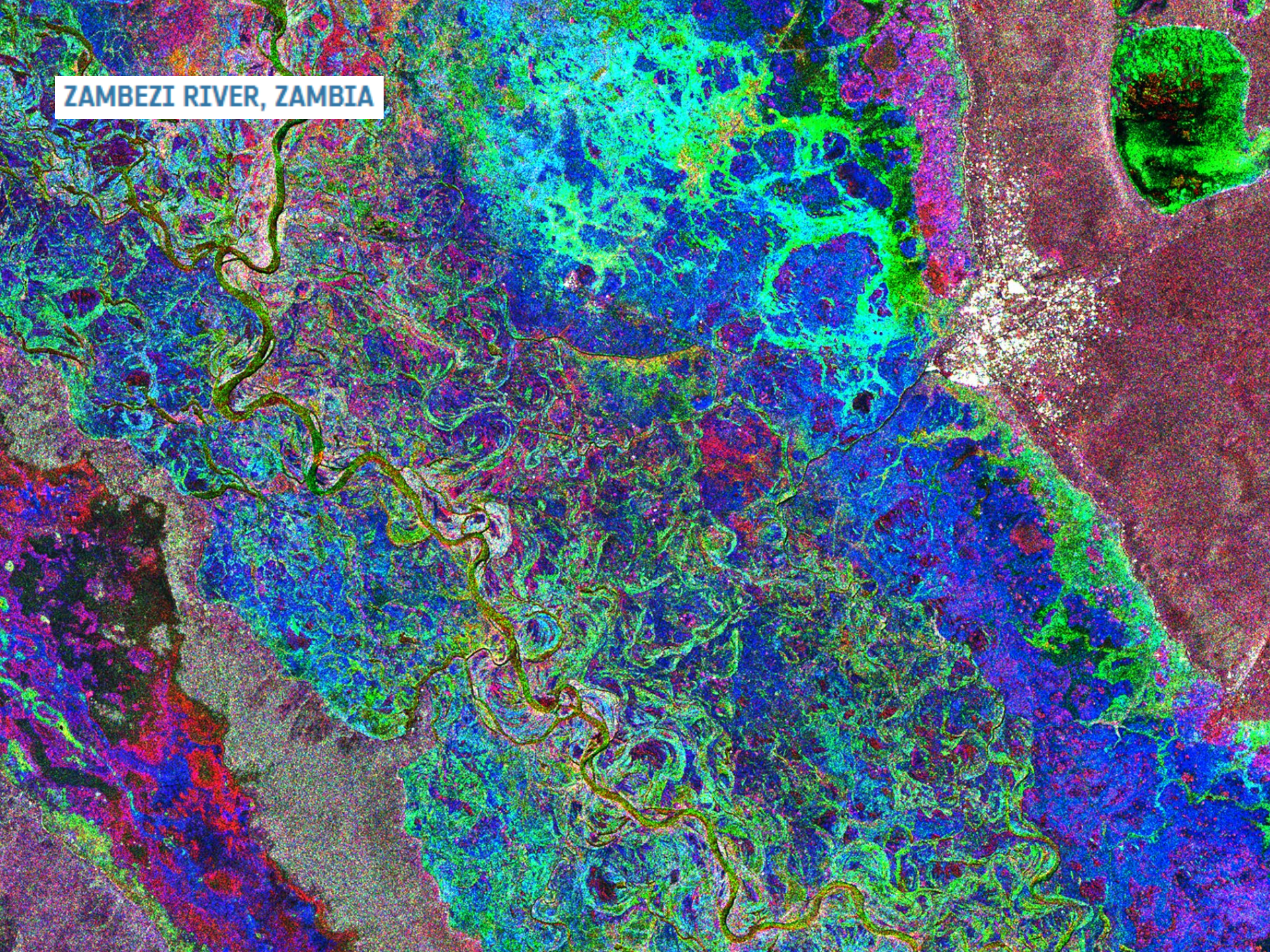
CHERNOZEM CROPLAND



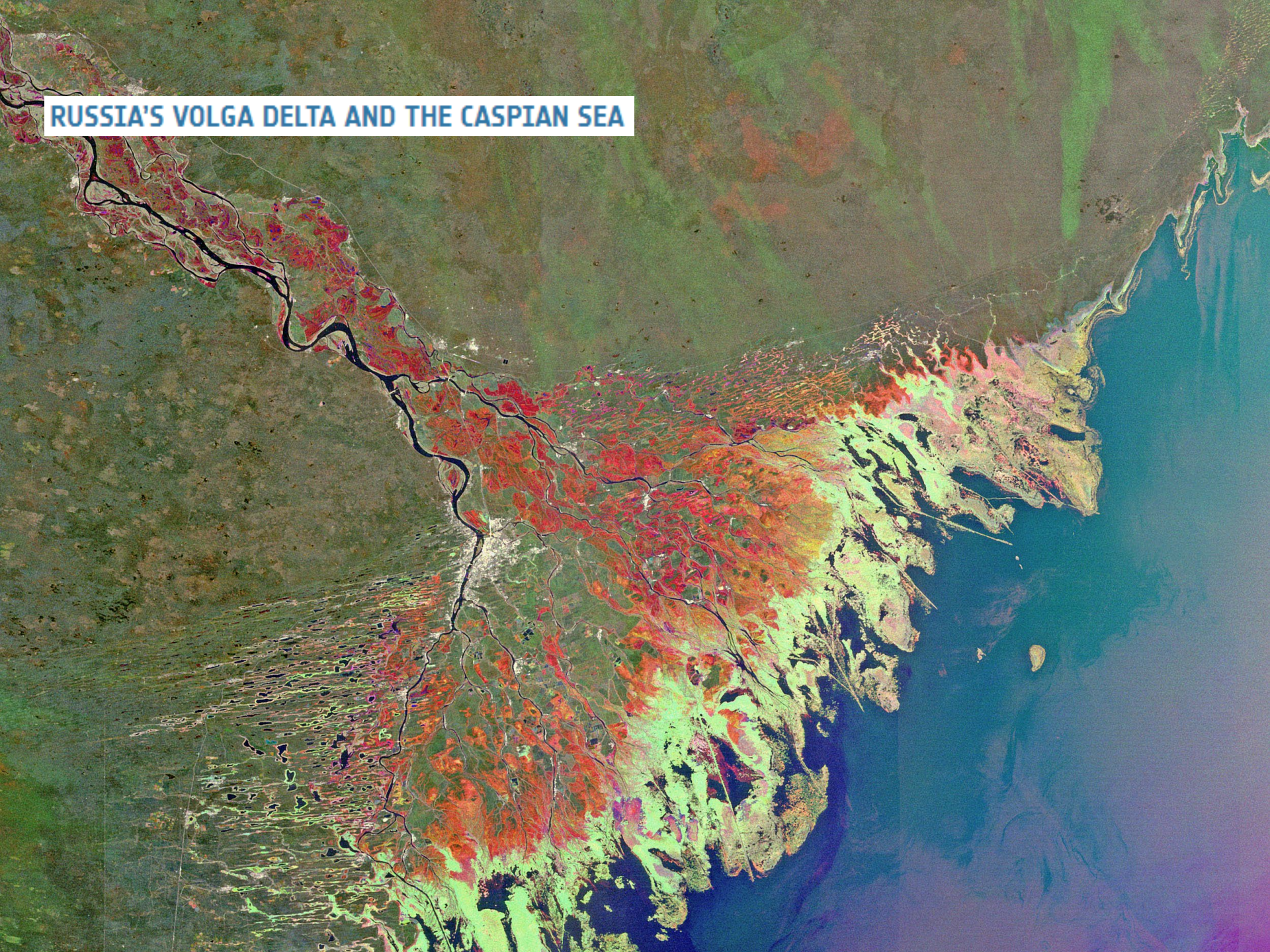
WATERS OF THE ZAMBEZI



ZAMBEZI RIVER, ZAMBIA



RUSSIA'S VOLGA DELTA AND THE CASPIAN SEA



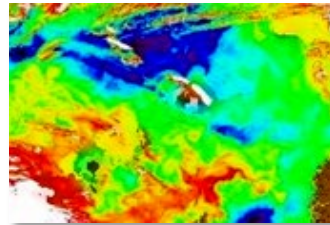


EO Service Portfolio

In Preparation of Copernicus



- Services with formal specifications, standards, validation
- Developed (via SLA) in collaboration and agreement of 400+ national user organisations
- Qualified service suppliers
- 2003–2012 (130 M€)



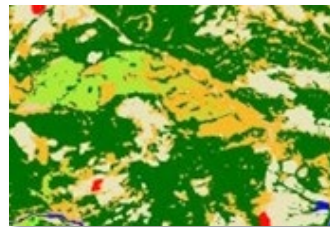
Marine & Coastal



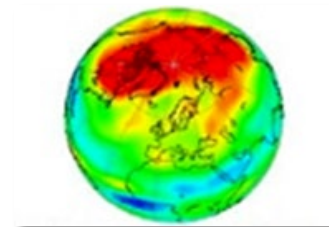
Polar & Sea Ice



Soil, Water & Urban



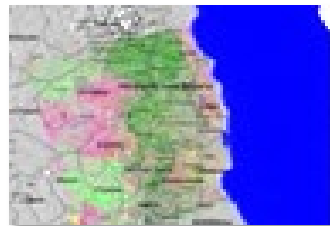
Forest Monitoring



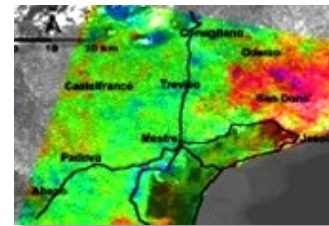
Atmosphere



Flood & Fire Risk



Food Security



Land Motion



Humanitarian Aid

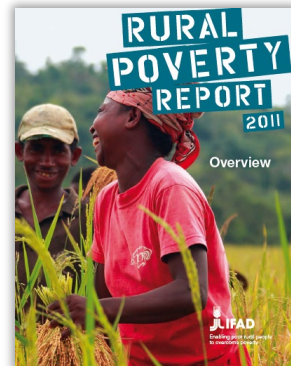
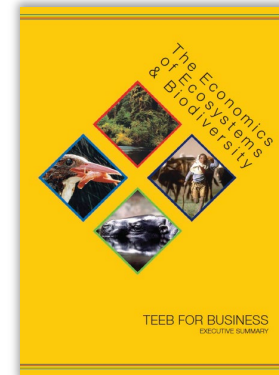
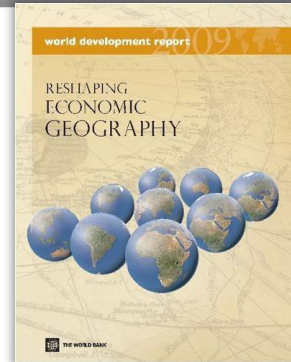


Maritime Security

To which Development Issues is EO Relevant?



- Sustainable Agriculture and Food Security
- Rural Development
- Water
- Clean Energy
- Oceans Living Resources
- Sustainable Cities
- Forestry (REDD)
- Transport
- Ecosystems Valuation
- Health
- Climate Resilience
- Disaster Risk Reduction and Recovery+



The European EO Service Industry



eo PAGES

218 COMPANIES 25 COUNTRIES 346 SERVICES 161 BUSINESS QUERYS

Search & Find Address Book EOMarket Success Stories News About

EARSC
European Association
of Remote Sensing
Companies

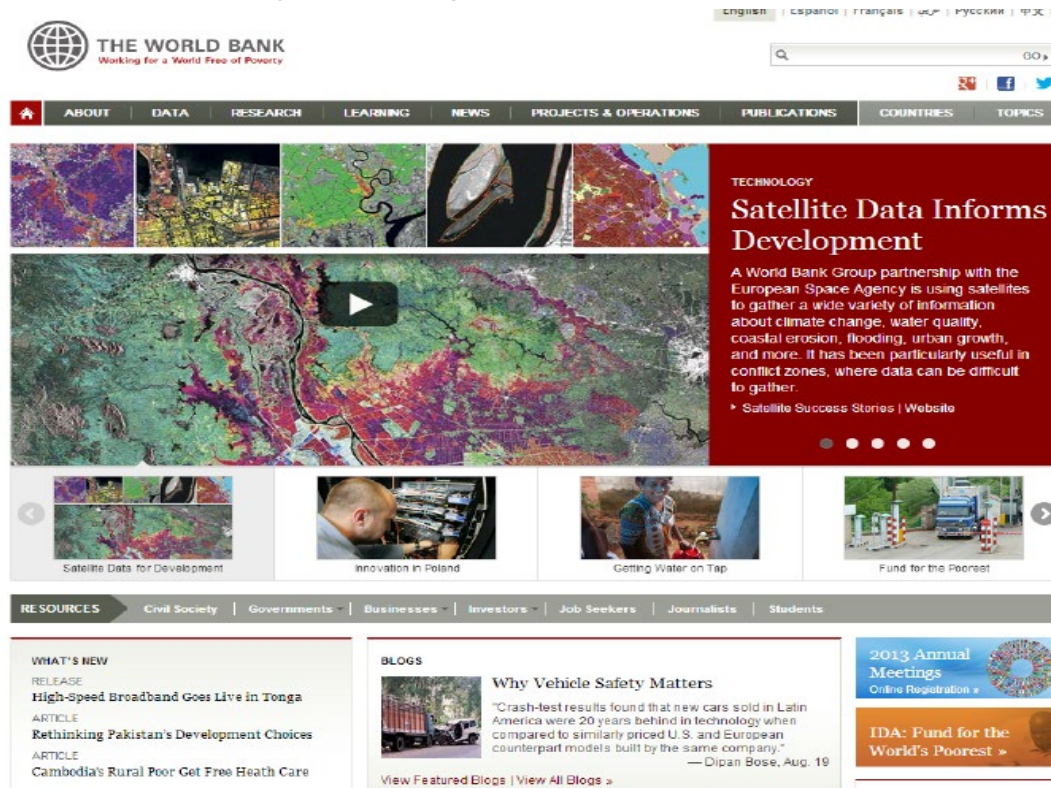
- **300+** suppliers (small companies), **5000+** employees
- **350+** specialised EO information products & services
- **650–750 M€** annual turnover in Europe (2012, services + data)



International Development : EO as 'best-practice' environmental information



- 65 small-scale demonstrations (local-level, each 100K€) of EO products with Bank staff since 2008,
- These activities have established the interest & potential for a wide range of EO information products about many different aspects of the Earth's environment (terrestrial, marine, atmosphere, cryosphere)



International Development Organizations

How could they use EO ?



Information Drivers

- **Green Growth**
 - Environmental impact / sustainability of economic development investments
- **Climate Resilience / Proofing**
 - Long-term durability of development investments
- **Natural Capital Valuation**
 - Economic valuation of Ecosystems for National and Global accounting (GDP)
- **Open Development**
 - Increasing drive towards transparency in knowledge resources

Information Uses

- **In support directly to Programs / Projects**
 - concept definition, planning, implementation
 - close-out and remission
 - as part of capacity-building in developing countries
- **In support of monitoring & evaluation methodologies**
 - as *best-practice* to harmonize M&E tools:
 - Feasibility
 - Environmental Impact Assessments
 - Audits
- **In support of policy & planning**
 - sectorial analyses
 - country development planning
 - recent financial approaches to valuation of natural capital



THE WORLD BANK



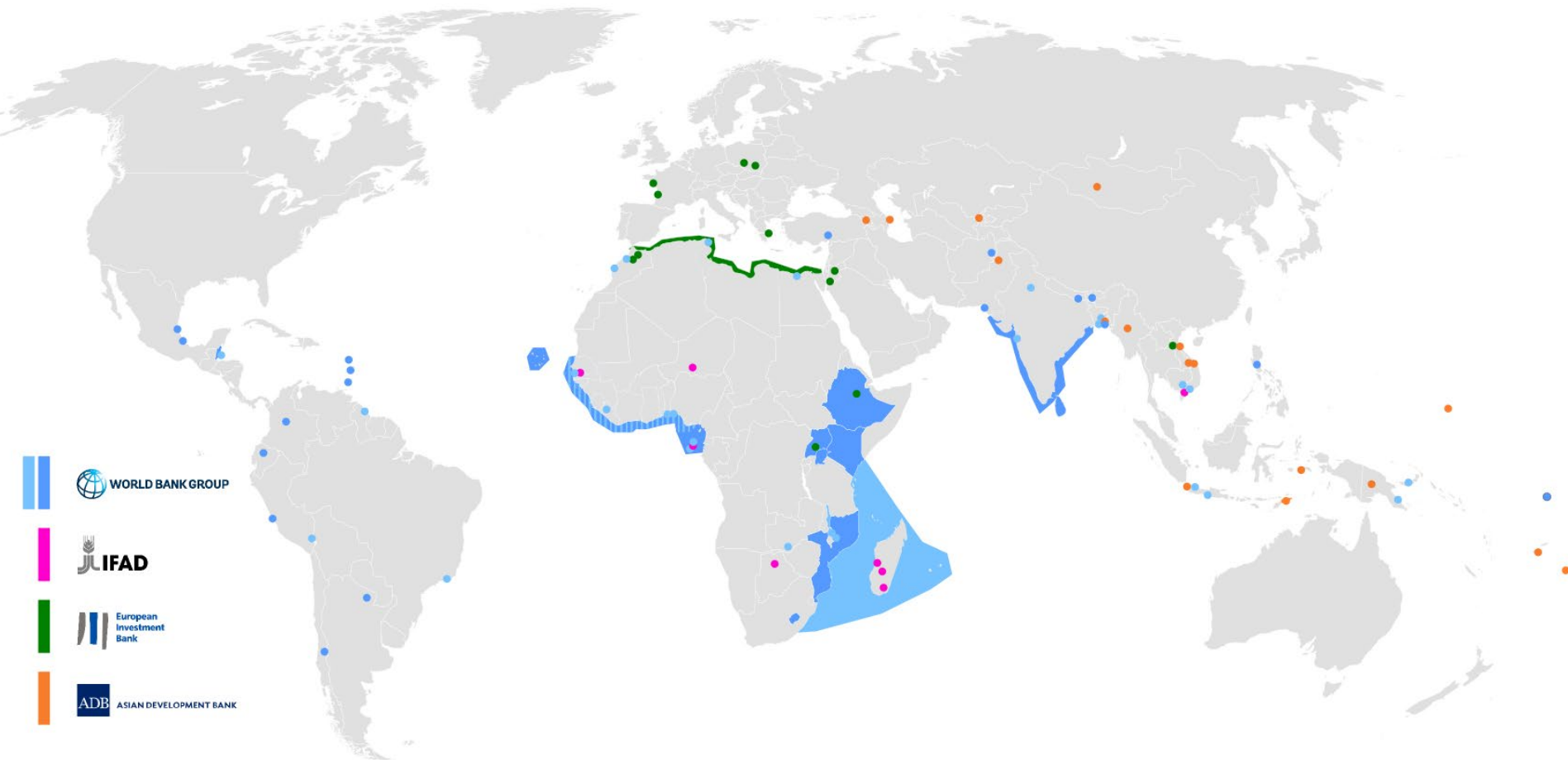
European Space Agency

65 small-scale demonstrations :

Responding to specific geospatial information needs



- **Land** Urban Infrastructure, Land Cover, Forest, Crops, Soil erosion, In-land Water,
- **Marine** Oil-spill, Fishing, Coral Reef, Coastal Change, Sea-level Height, Ocean Currents,
- **Risk** Floods, Land Motion Histories for Subsidence / Landslide / Seismic events.



CONCLUSIONS

Ramesh Kana, CEO, Emery Oleochemicals

Adrienne Gardaz Cuendet, Senior Policy Manager, UN Global Compact

Anna Burzykowska, Earth Observation Projects Specialist, European Space Agency

H.E Amira Gornass, Permanent Representation of Sudan to FAO, CFS Chair

PSM PARTNERSHIP FORUM ON THE SUSTAINABLE DEVELOPMENT GOALS

WHEN

THURSDAY OCTOBER 20 / 15:00 – 18:00

